

The Only Fast Food Restaurant Along Route 11 in the 1920s

By Karen Ferguson, Town of Kirkwood Historian



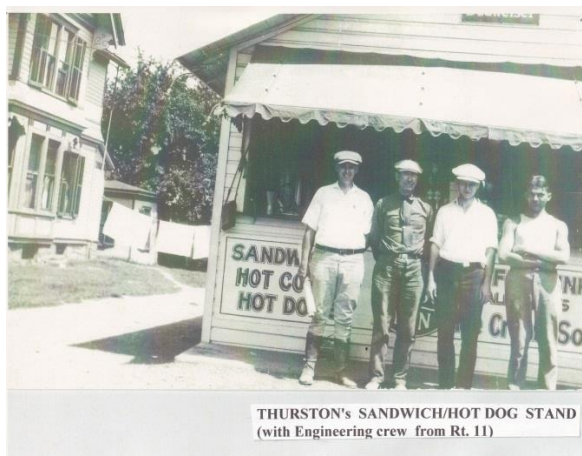
Myra & Foster Thurston

This past year the Kirkwood Historical Society renovated Pop Finkel's Hot Dog Stand. However, before Pop's, there was another "fast food" stand. That stand was known as Thirty's Inn and was owned and operated by Myra and Foster Thurston in the 1920s-1930s. Their stand was the only one on old Route 11 between Binghamton and Scranton. It was located on Main Street in the Village on the lot next to their house (across from the fire station). However, when their barn burnt down, the stand was moved toward the back of their property. Thirsty's Inn had a room in the back and was open to the front with soda fountain tables and wire chairs. The structure is still there but now serves as a garage.

As written by Ellen Thurston in 1992, the stand sold hot dogs, root beer, and ice cream. The rootbeer they sold was Hires. It was made in a keg and rolled up and down their

driveway to mix it. Ice for the rootbeer was stored in the icehouse behind their wellhouse, which was still standing in the 90s. Ice at that time had to be cut from Benny's pond (the ponds adjacent to Veteran's River Park). One sign said "Mom's at home, but we've got Pop on ice!" Teenagers used to hang out there and dance. Among them were the Campbell sisters - Marion and Claire, John Studer, John Davern, and Millie Ostrander.

The Kirkwood Historical Society's Schoolhouse #2 Museum has in its possession a couple signs and a few other miscellaneous items from Thirsty's Inn which were donated by the Thurston family. We are grateful for these donations as a way to preserve our past and share it with future generations. If you have pictures or other items you would like to donate, please feel free to contact the Historian's Office at the Town of Kirkwood. My email is historian@townofkirkwood.org



THURSTON'S SANDWICH/HOT DOG STAND
(with Engineering crew from Rt. 11)



Present Day Structure, former Thirsty's Inn